

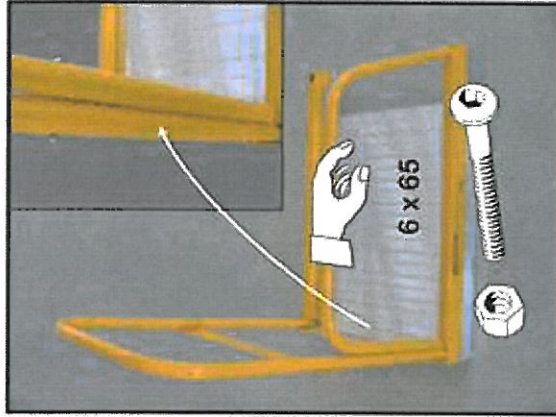
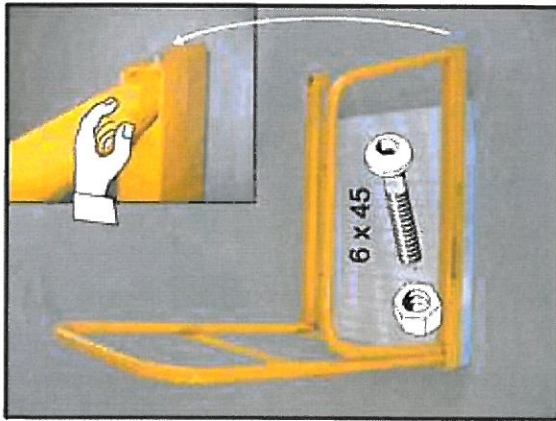
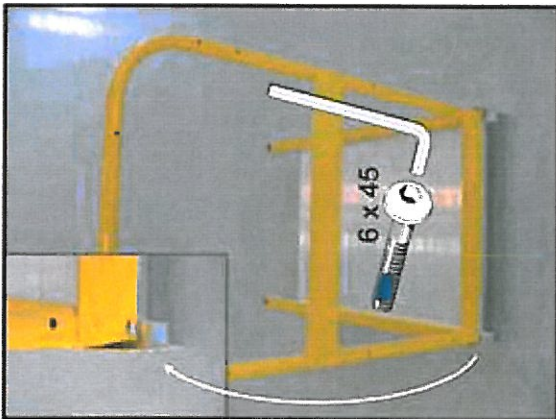


Stockmaster[®] Navigator / Tracker / WinchTruk

Platform Rails and Frames Assembly

[Start here](#)

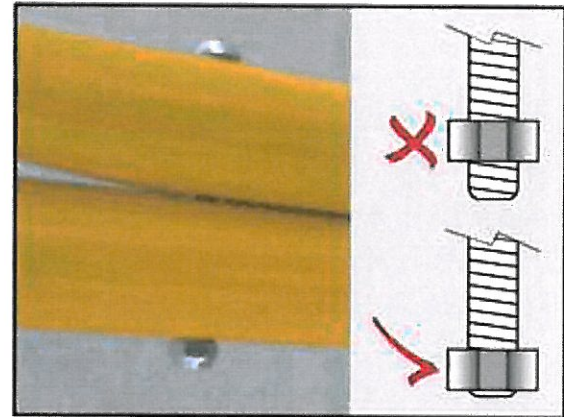
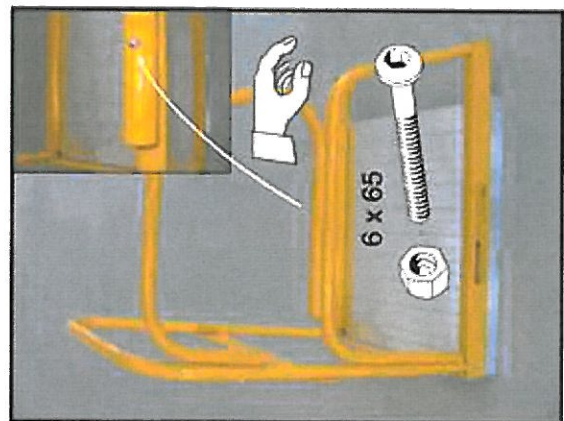
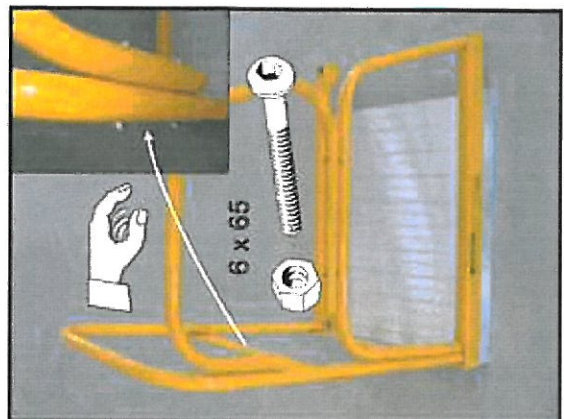
IMPORTANT: To avoid assembly problems follow these instructions exactly.
Work safely - Do not stand the frames upright when assembling. Place the frames in the positions as shown in the colour illustrations.



1

2

3



4

5

6

Step 1. Fix the **Rear Safety Rail** to the rear of the **Platform Kickrail**. Use a 6 x 45 mm patchlock bolt (blue coated) and screw in with the hexagon key **leaving the bolt slightly loose**. (See inset detail illustration No.1)

Step 2. Fix the **Lower Side Safety Rail** to the **Platform Kickrail**. Slide the **Safety Rail** into the **Kick Rail**. Place a 6 x 45 mm bolt through the top hole at the front of the **Kick Rail** and fit a nut - *finger tight only*. (See inset detail illustration No.2)

Step 3. Fix the **Lower Side Safety Rail** to the **Rear Safety Rail** using two 6 x 65 mm bolts and nuts - *finger tight only*. The bolt heads should be on the **Platform side**. (See inset detail illustration No.3)

Step 4. Fix the **Upper Side Safety Rail** to the **Rear Safety Rail** using two 6 x 65 mm bolts and nuts - *finger tight only*. The bolt heads should be on the **Platform side**. (See inset detail illustration No.4)

Step 5. Fix the **Upper Side Safety Rail** to the **Lower Side Safety Rail**. Use two 6 x 65 mm bolts and nuts with the bolt heads uppermost - *finger tight only*. (See inset detail illustration No.5)
 Repeat steps 2 to 5 for the other rails.

Step 6. Check that the rails are aligned and use the **Hex Key and Spanner** to tighten all bolts. The 65 mm bolts must be tightened until the screw end is flush with the back of the nut. (as illustrated)

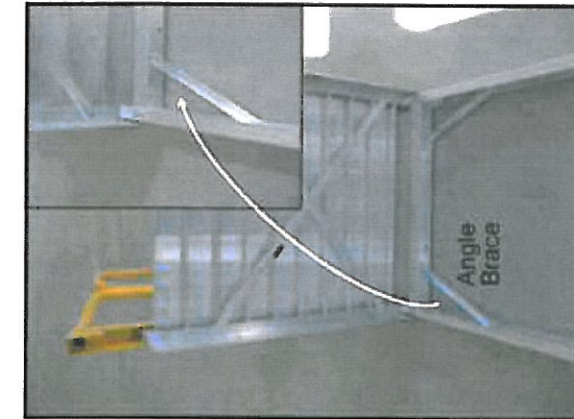
Step 7. See over page →



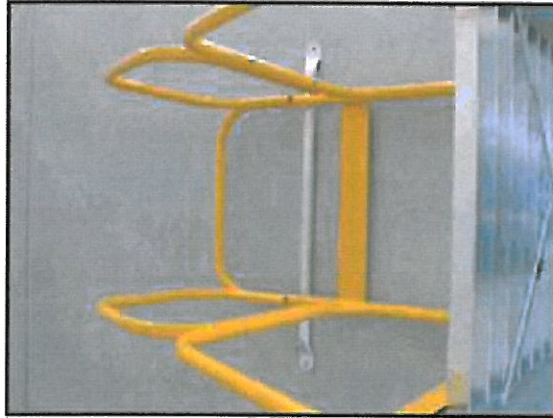
Stockmaster® Navigator / Tracker / WinchTruk

Platform Rails and Frames Assembly

Note: Start from other side



7



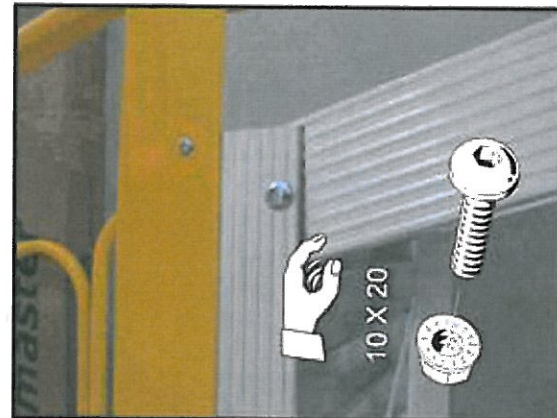
8



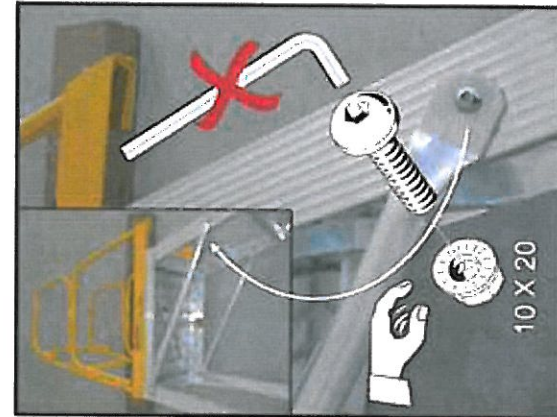
9



10



11



12

Step 7. Lay the **Rear Frame** (without steps) on the floor. Check that the **Angle Brace** is at the floor level. If not, turn the frame over. (See inset detail illustration No.7) Place the **Platform** over the frame as shown.

Step 8. Place one of the two **Tube Braces** under the **Platform Safety Rail** in the position illustrated.

Step 9. a) Fix the other **Tube Brace, Platform** and **Rear Frame** together using a 10 x 20 mm bolt and nut - *finger tight only*. For ease, lift the Frame up slightly. b) Remove the Tube Brace from under the Platform Safety Rail and fit as above.

Step 10. Turn the **Platform** on it's side. - the **Rear Frame** will stand up. Place something under the **Platform Rails** as illustrated, so the centre line of the **Rear Frame** is approximately parallel to the floor. (The long box may be used for this)

Step 11. Engage the **Front Frame** (with steps) into the **Platform** and fix together using a 10 x 20 mm bolt and nut - *finger tight only*. For ease, lift the Frame up slightly. Repeat this step for the other side.

Step 12. Fix the free ends of the **Tube Braces** to the **Front Frame** using 10 x 20 mm bolts and nuts - *finger tight only*. Now stand the unit up. **Do not tighten the 10mm bolts until advised.**

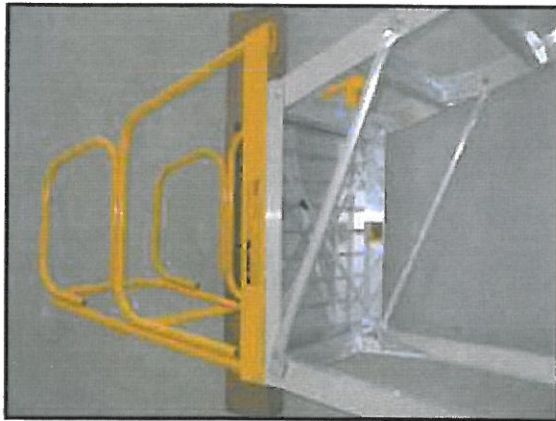
NEXT:

For all sizes see instructions for fitting the **Tube Braces**. These instructions are included with the **Mobilisation** (in the long box)

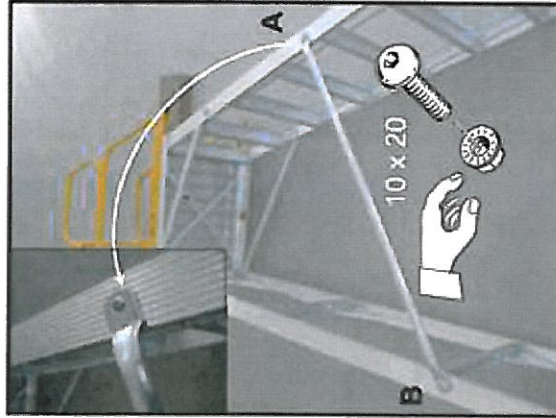


StockmasterTM Tracker

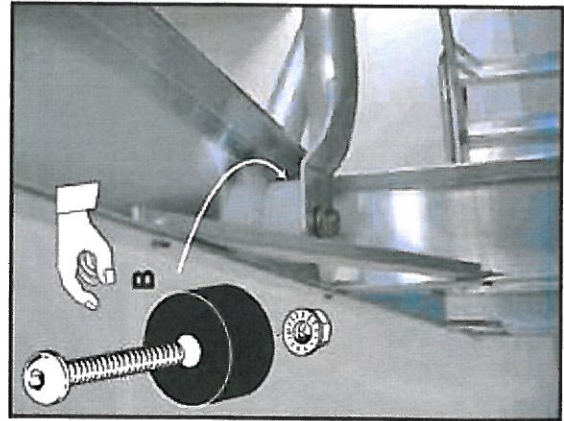
Tube Brace Assembly



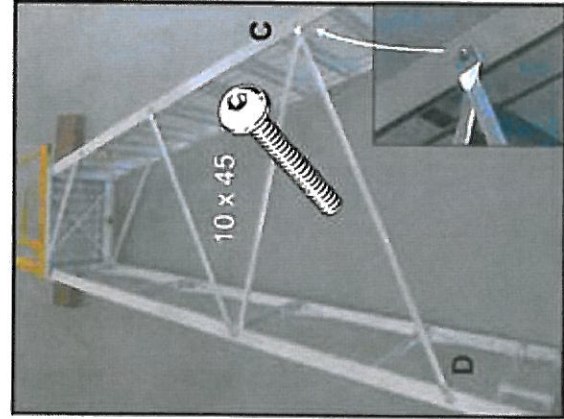
1



2



3



4

IMPORTANT: To avoid assembly problems follow these instructions exactly. Work safely - Do not stand the frames upright when assembling. Place the frames in the positions as shown in the colour illustrations.

Note: Complete Platform assembly first

Instructions for sizes up to 7 steps including the platform.

There are no Tube Braces to be fitted to these sizes.

Next: See over page. →

Instructions for sizes with 8 to 11 steps including the platform

Step 1. Place the Platform on it's side and place something under the Platform Rails as illustrated, so the centre line of the Rear Frame is approximately parallel to the floor. (The empty Mobilisation box may be used for this)

Step 2. Fix the two remaining Tube Braces to the Frame at **A** and **B** using the 10 x 20 mm bolts and nuts supplied with the Braces. Fix both Braces to the Frame *finger tight only*. **Note: Do not tighten the 10mm bolts until advised.** Next: See over page. →

Instructions for sizes with 12 to 14 steps including the platform

Step 1. Place the Platform on it's side and place something under the Platform Rails as illustrated, so the centre line of the Rear Frame is approximately parallel to the floor. (The empty Mobilisation carton may be used for this)

Step 2. Fix one end of a **Small Tube Brace** to the Frame at position **A** using a 10 x 20 mm bolt and nut supplied with the Brace. - *finger tight only*.

Step 3. Fix the remaining end of the Small Tube Brace and one end of a **Middle Size Tube Brace** to the Frame at **B**. Use a 10 x 45 mm bolt, nut and spacer supplied with the Middle Size Braces. The Small Brace fixes to the outside of the Frame. Fit a Spacer over the bolt on the inside of the Frame and fix the Middle Size Brace to the inside of the Frame - *finger tight only*.

Step 4. Fix the remaining end of the Middle Size Brace to the inside of the Frame and the **Large Tube Brace** to the outside of the Frame at **C** - *finger tight only* as described above. (See illustration at bottom right-hand corner) Fix the remaining end of the large Tube Brace at **D** - *finger tight only*. **Note: Do not tighten the 10mm bolts until advised.**

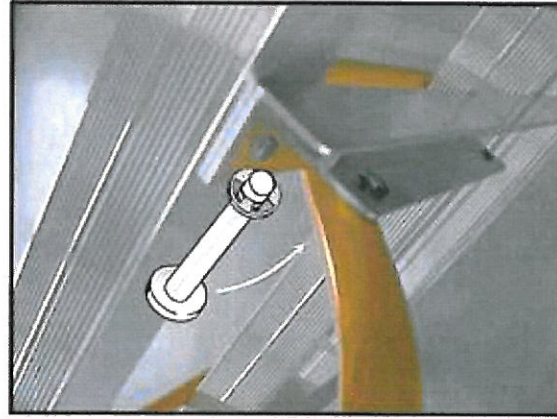
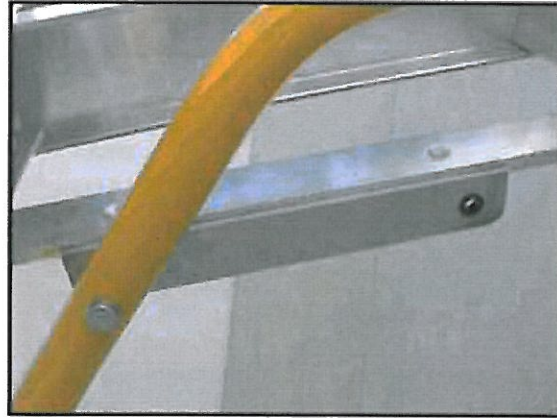
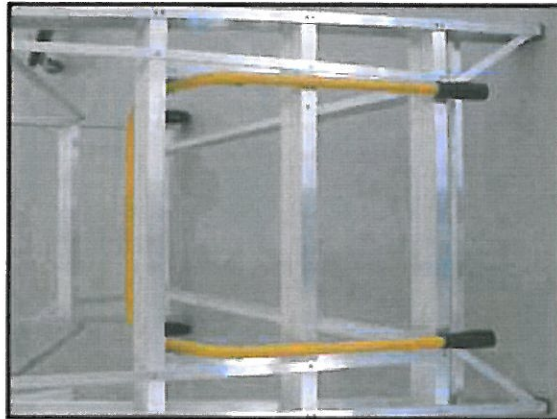
Next: See over page. →



Stockmaster[®] Tracker

Control Handle and Handrail Assembly

Note: Start from other side.
IMPORTANT: To avoid assembly problems follow these instructions exactly.
This assembly is done with the Stockmaster standing upright.



Step 1. Position the **Control Handle** in the **Step Frame** between the 2nd and 3rd step as illustrated.

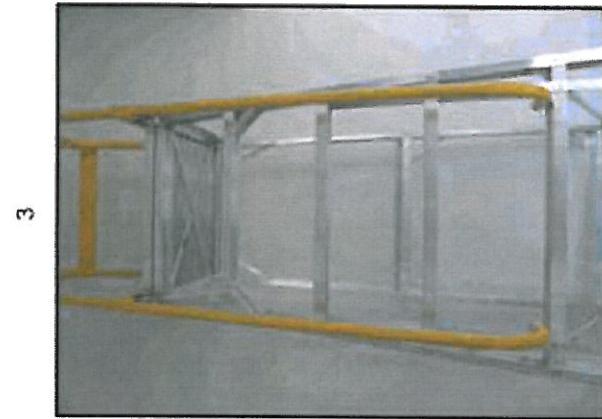
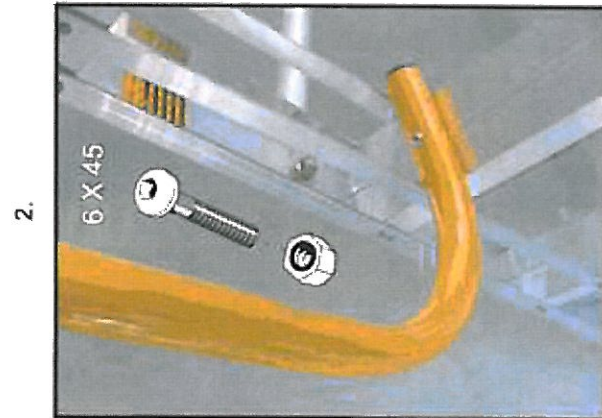
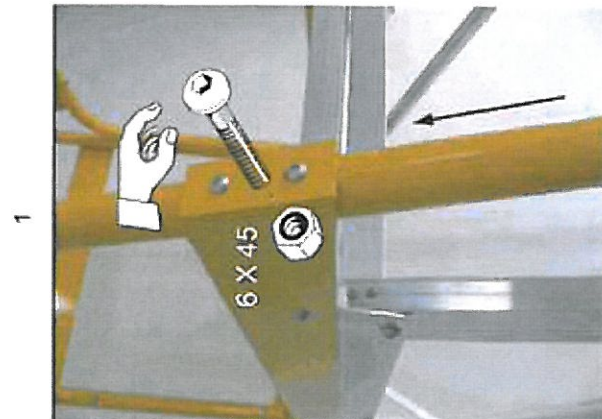
Step 2. Fix the **Control Handle** to the **Frame**. Pass the **E Pin** through the hole in the **Control Handle** and the upper hole in **Mounting Angle** of the **Step Frame**.

Step 3. Secure with a **E Clip**. (Tip - the clip may be pushed into place with a coin or screwdriver blade)

Illustration 2 shows the head of the **E Pin** in position in the hole of the **Control Handle**.

Illustration 3 shows the assembly when viewed from inside the frame and a detailed pin assembly.

NEXT: For sizes **6 and over** only go to step 5.
For sizes **5 and under** see **Mobilisation Assembly** instructions.



Step 4. Fix the **Hand Rail** to the **Platform Kickrail**. Slide the **Hand Rail** into the **Kickrail** and rotate the **Hand Rail** so that the lower end is over the **Step**. Place a **6 x 45 mm bolt** through the bottom hole at the front of the **Kick Rail** and fit a **nut - finger tight**

Step 5. Fix the **Hand Rail** to the **Step**. Place a **6 x 45mm bolt** through the **Handrail** and **Step** and fit the **nut** under the **Step**. Check that the **Hand Rails** are correctly aligned and tighten the bolts using the **Hex Key** and **Double Ended Spanner**.
Photo 6 illustrates the completed **Handrail** assembly

NEXT: See **Mobilisation Assembly** instructions..